

THE DEAF HEALTH CHARITY SIGNHEALTH

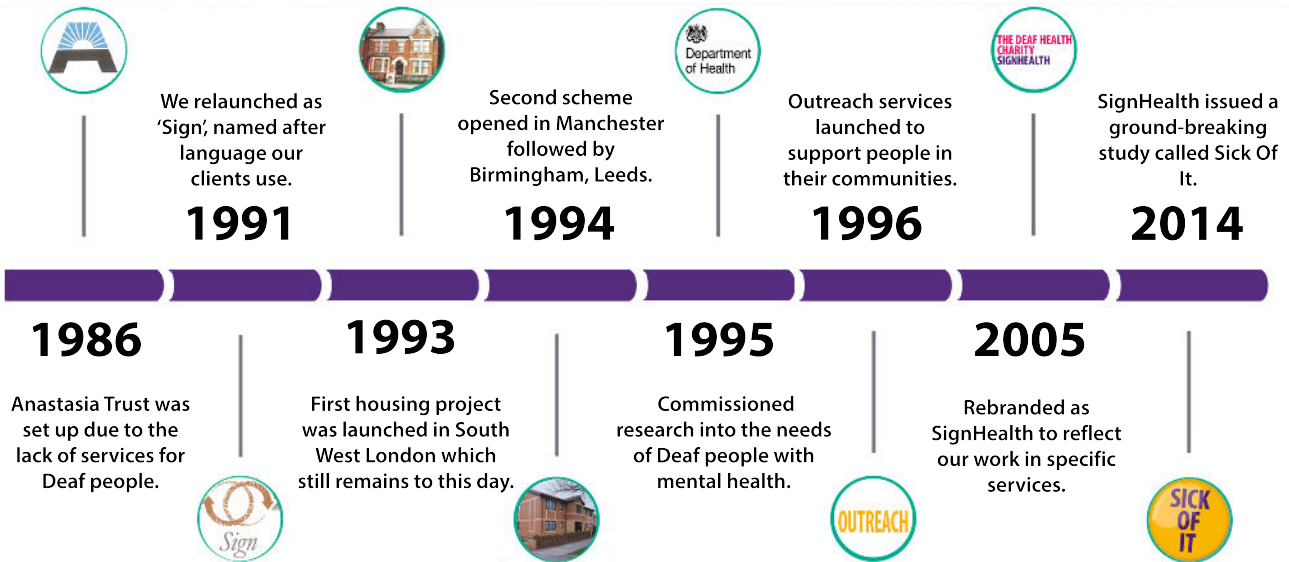
**Help to ensure that
Deaf people get the
same opportunities
as hearing people.**

Leave a gift to SignHealth in your will



INTRODUCING SIGNHEALTH

Our history



We want to see...

A world where there are no barriers to good health and wellbeing for Deaf people

Our three year plan

To 2022 and beyond

There will be more care home places to support Deaf people in BSL for their mental health. More Deaf people, including young people, will have access to psychological therapy in BSL. We will expand our domestic abuse service across the whole of the UK.

Developing our profile with 3 key groups: Sources of income and referrals, people with power or influence and Deaf people. More research into Deaf people's health and the views of those who have used health services, including our own, will drive the future of SignHealth.

SignHealth will become a BSL proud organisation and staff will be employed within a clear salary structure. Infrastructure at SignHealth will be regularly invested and updated to further support our staff to become even better leaders.



Key areas of focus

1 Deaf young people's therapy

There is currently no Mental Health provision for Deaf children and young people aside from Deaf CAHMS and hospital admission. This should be provided locally in an accessible setting

Over the next 3 years SignHealth will implement a national Mental Health service for Deaf children and young people.

2 Domestic abuse service

Deaf women experiencing Domestic Abuse are disadvantaged by postcode. Currently our service is only accessible to Deaf women living in London, Kent and Sussex.

Over the next 3 years, we will establish a national domestic abuse service for Deaf women across the country.

3 Improving access to health services

Mainstream services are still inaccessible for Deaf People.

Over the next three years we will ensure Deaf people have the same kind of access as hearing people.

The funding for the outlined products would be **£100,000 per annum**. This will ensure that we can achieve the much needed changes to improve Deaf people's health and well being.

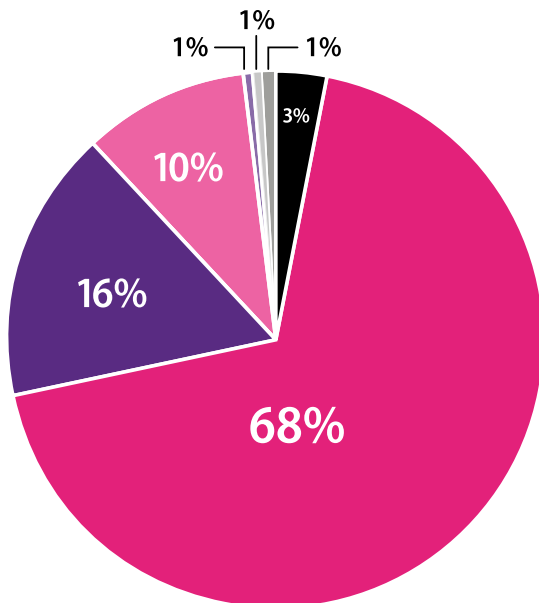


THE IMPACT OF A LEGACY

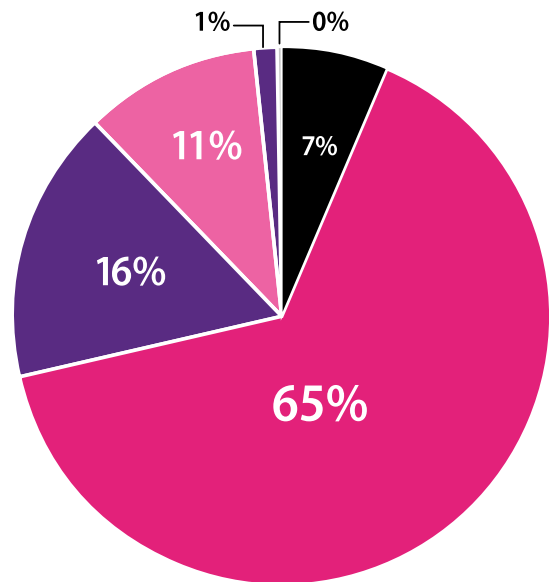
Why are legacies important to SignHealth?

We depend on the generosity of people and organisations that support us. Leaving a gift in your will means that we can continue to be there for people relying on SignHealth's services, and improve the health and wellbeing of Deaf people for years to come.

Where Money Comes From



Where Money Goes



- Social Care
- Therapies
- Grants
- Donations & Legacies
- Fundraising
- Investment
- Other Charitable Activities

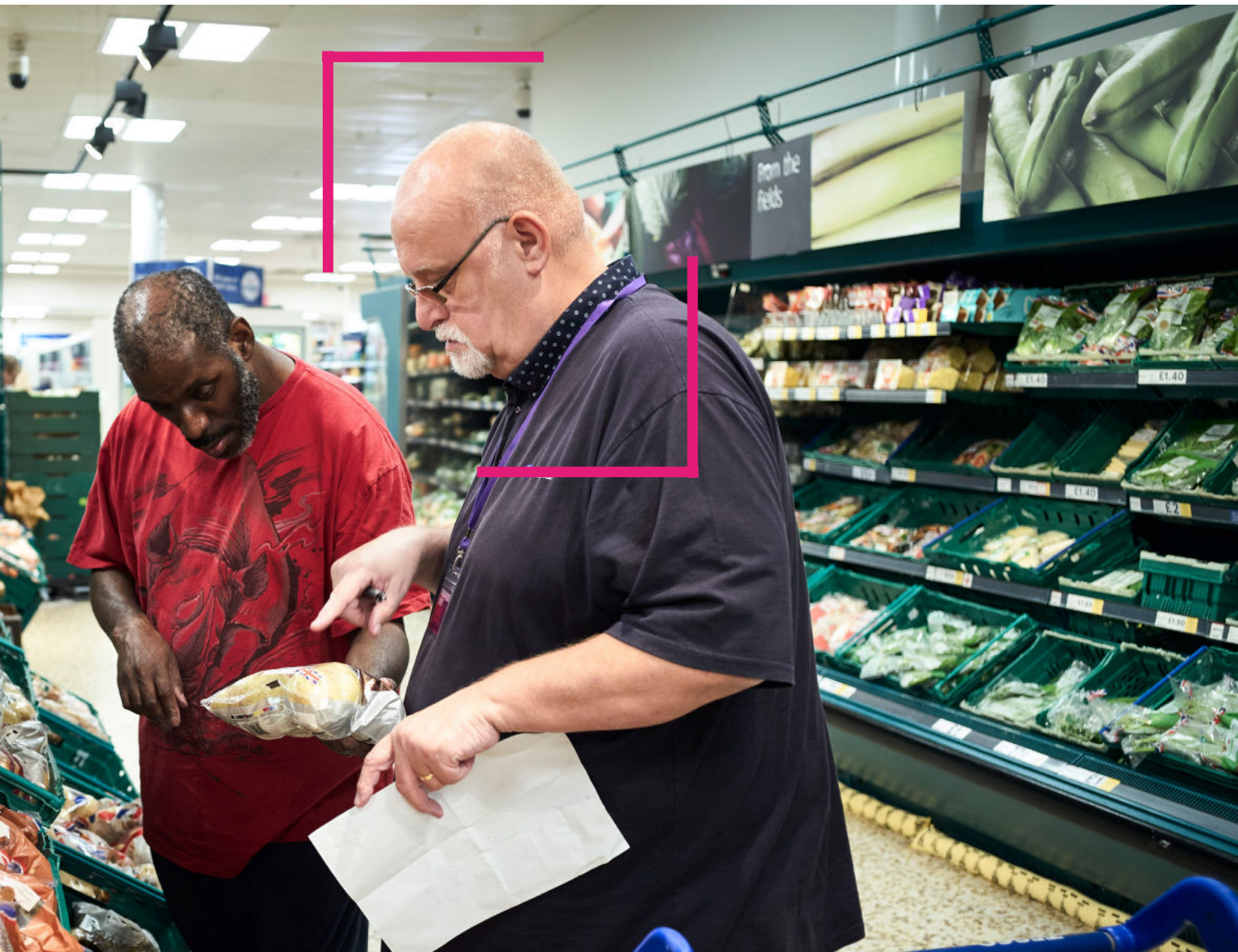
- Social Care
- Therapies
- Domestic Abuse
- Raising Funds
- Other Charitable Activities
- Loss of sale of Assets

Case study

Bob (not his real name) joined one of our residential homes in Manchester. Prior to moving in, Bob was living in his own flat with family support. His mental health deteriorated and he would spend long periods of time in bed. This led to an admission to a Deaf mental health unit and a clinical mental health diagnosis.

Today Bob's mental health shapes his life in a more positive way. Everyone in the home communicates in BSL and understands Deaf culture meaning Bob is able to talk and express himself freely. He has a structure to his week and feels empowered to make decisions which affect his life and are central to his care needs.

After much support and reassurance from staff, Bob engaged with SignHealth's psychological therapy team. This has been really positive for his recovery. Bob wants to live independently and to have a job in the future and we will do everything we can to help him achieve that.



ABOUT WILLS

The importance of having a will

Creating a will can give you peace of mind; it's reassuring for your family and friends to know that they are acting on your wishes, and taking care of your estate in the way that you wanted.

If you die without leaving a will then there are certain rules about how your assets are divided. This can be a very complicated and time consuming process, and ultimately your assets might be shared out in ways you didn't originally intend.

Opportunity to save on inheritance tax

Gifts to registered charities (like us) are exempt from Inheritance Tax. Leaving a gift to charity in your will can reduce the amount of tax you have to pay as it is deducted from the value of your estate prior to taxation. It's always best to discuss how you could save on tax with your solicitor.



Different kinds of gifts

There are three main types of gifts:

1 Specific gift

This is a specific amount of money or an item, such as a piece of jewelry, that you want to leave to someone. Make sure it is very clear for your executors exactly what you want to leave and to whom. For instance, if you are planning to leave a cash gift to SignHealth then you could use the wording below:

"I give to SignHealth, RCN 1011056 of CAN Mezzanine, 49-51 East Road, London, N1 6AH, the sum of [£ amount] to be used for its general charitable purposes and I direct that the receipt of the treasurer or duly authorised officer shall be a sufficient discharge to my executors."

2 Residuary gift

This is when a share of your total estate is given to someone, after all of your other gifts have been given and outstanding debts have been paid. If you were planning to do this for SignHealth, you could use the wording below:

"I give [fraction / % share / all] of the residue of my estate to SignHealth, RCN 1011056 of CAN Mezzanine, 49-51 East Road, London, N1 6AH, to be used for its general charitable purposes, and I direct that the receipt of the treasurer or duly authorised officer shall be a sufficient."

3 Non-specific gift

This does not refer to anything in particular, for instance the will could just say 'all my possessions'.

Remember, any gift, however big or small, will help SignHealth to deliver vital services for future generations.

A GUIDE TO MAKING A WILL

How to write a will

There are several different ways to write a will, depending on your circumstances. If your will is very straightforward then you could buy a template from a stationery shop, use an online service or speak to a will writing company.

If there are any complications, such as setting up a trust for a child, then you should seek advice from a solicitor. It is very important that your will is set up correctly so your wishes can be carried out. So no matter how easy your circumstances seem, we recommend that you use a solicitor or a member of the Institute

Step by step process

Step 1

Decide how you are going to make your will



- DIY kit
- Online will writing service
- Solicitor (recommended)

Step 2

Make a list of all your assets



- Property
- Possessions / Personal belongings
- Savings and investments

Step 3

Make a list of any debts



- Mortgage
- Loans
- Credit cards

Step 4

Decide how your estate will be divided



- Friends
- Family
- Gifts for charity / charities

Step 5

Choose your executors (who will administer your estate)



- Friends
- Family
- Solicitor

Updating your will

If you already have a will and would like to update it to include a gift for SignHealth then you can do this by making a simple addition to your existing will. This is called a codicil. By adding this simple document you can add and delete instructions without having to go through the will writing process again. Your solicitor will be able to advise you on how to make changes to your will.

Thank you for considering leaving a gift to SignHealth in your will.

Although we would always encourage you to let us know if you are planning to leave us a legacy, your will is private, so please do not feel as though you have to.

If you would like to speak to our fundraising team about leaving a gift to SignHealth, then please do not hesitate to get in touch.

signhealth.org.uk
07966 976749
info@signhealth.org.uk
020 3947 2600

SignHealth
CAN Mezzanine
7-14 Great Dover Street
London
SE1 4YR